

PROFESSIONAL COPY

Sing Me The Melody Of Love

Lyric by  
HARRY D. KERR

Music by  
WILL E. SKIDMORE

Andante



Molto espressivo



I nev - er knew that Par - a - dise could send an an - gel here, Un -  
I nev - er knew the path of life was free from ev - 'ry thorn, Un -



til you came in - to my life and kissed a - way each tear. I  
til I walked with you, dear heart, a - mid the flow'rs one morn, And

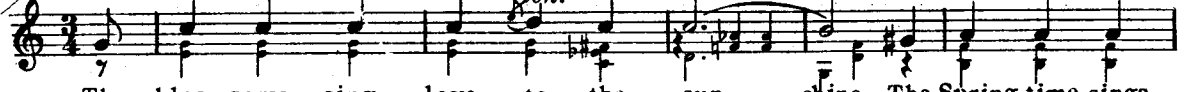


nev - er knew that mus - ic thrill'd the heart as you thrill'd mine, When  
all the songs in all the world, on earth or Heav'n a - bove, Could



first I heard you sing to me, Love's mel - o - dy di - vine. —  
nev - er take the place of your sweet mel - o - dy of love. —

CHORUS *Valse lento*



The blos - soms sing love to the sun - shine, The Spring - time sings



love to the rose — Each bird in the tree, Sings a grand sym - pho -



ny, When the long sum - mer day takes re - pose; The night time sings love to the



moon - beams, While stars glow and twinkle a - bove — And when twi - light is



fading, My heart, dear, is call - ing, Sing me the mel - o - dy of Love.

XVII by Will E. Skidmore  
Co., Sole Selling Agents.