

1922

PROFESSIONAL COPY  
THIS COPY NOT FOR SALE

McKinley Music Co. 1507 E. 55th St., Chicago  
1658 Broadway, New York



# When You Long for a Pal Who Would Care

Lyric by  
E. CLINTON KEITHLEY

Music by  
JEANNETTE DURYEA

Valse Andante

*mf*

Musical notation for the piano introduction, consisting of two staves (treble and bass clef) in 3/4 time, key of B-flat major. The melody is in the right hand, and the accompaniment is in the left hand. The dynamic marking is *mf*.

*p*

You said good - bye with - out a sigh To  
Through lone - ly years, through blind - ing tears, She

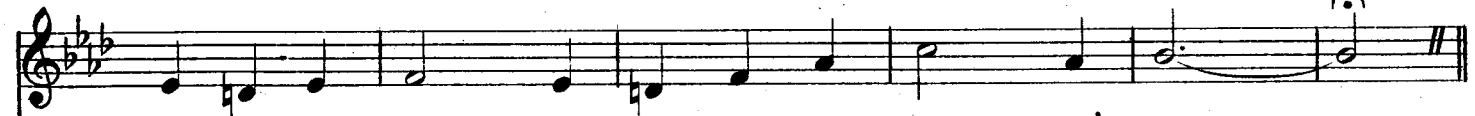
*rit.* L.H. *p*  
*allegro*

Musical notation for the first line of lyrics, including vocal line and piano accompaniment. The piano part includes a *rit.* (ritardando) section in the left hand and a *p* (piano) section. The tempo marking *allegro* appears at the end of the piano part.

loved ones you left be - hind; ——— On life's "great white way" you're  
watch - es for you're re - turn; ——— Each sor - row and care she

Musical notation for the second line of lyrics, including vocal line and piano accompaniment.

*rit.*



hap - py to - day, But some time I know you'll find: ———  
glad - ly would share, And some day your heart must learn: ———



**Chorus.** *Tenderly*  
*a tempo* *p - mf*



When you've wan - dered from home and you're all a -



lone, And you long for a heart fond and true, ——— When your



dreams all have flown, and you'd give all you own For a



pal whod be - lieve in you, ———— There is one you've for - got - ten, with

sil - vry hair, Just re - mem - ber she's still wait - ing there; ———— In her

*ad lib.*

heart, pure as gold, you'll find treas - ures un - told When you

*colla voce*

1 *a tempo* *mf* | 2

long for a pal who would care. ———— When you've care. ————

*mf a tempo* *rit.* L. H.

# When You Long for a Pal Who Would Care

Lyric by  
E. CLINTON KEITHLEY.

(Chorus for Male or Mixed Voices)

Music by  
JEANNETTE DURYEA

Chorus. (Melody in 2d Tenor and Soprano)

Tenderly. *p-mf*

TENOR I.

TENOR II.

BARITONE  
BASS

(Soprano) *p-mf*  
When you've wandered from home and you're all a - lone, And you long for a

(Alto)  
When you've wandered from home and you're all a - lone, And you long for a

(Tenor) *p-mf*  
When you've wandered from home and you're all a - lone, And you long for a

(Bass)  
When you've wandered from home and you're all a - lone, And you long for a

heart fond and true, When you're dreams all have flown, and you'd give all you own For a

heart fond and true, (fond and true) When you're dreams all have flown, and you'd give all you own For a

pal who'd be - lieve in you, (on - ly you), There is one you've for - got - ten, with sil - v'ry

pal who'd be - lieve in you, (on - ly you), There is one you've for - got - ten, with sil - v'ry

hair, Just re - mem - ber she's still wait - ing there; In her heart, pure as gold, you'll find

hair, Just re - mem - ber she's still wait - ing there; (waiting there); In her heart, pure as gold, you'll find

treasures un - told When you long for a pal who would care. (Who would care). When you've care. —

treasures un - told When you long for a pal who would care. (Who would care). When you've care. —